

Table 13B: Front Forks (Standard Marzocchi)

FORCELLA 350 N. 1F. D. MARZOCCHI
FORK 350 N. 1F. D. MARZOCCHI

TAV. N. 13B
TABLE 13B

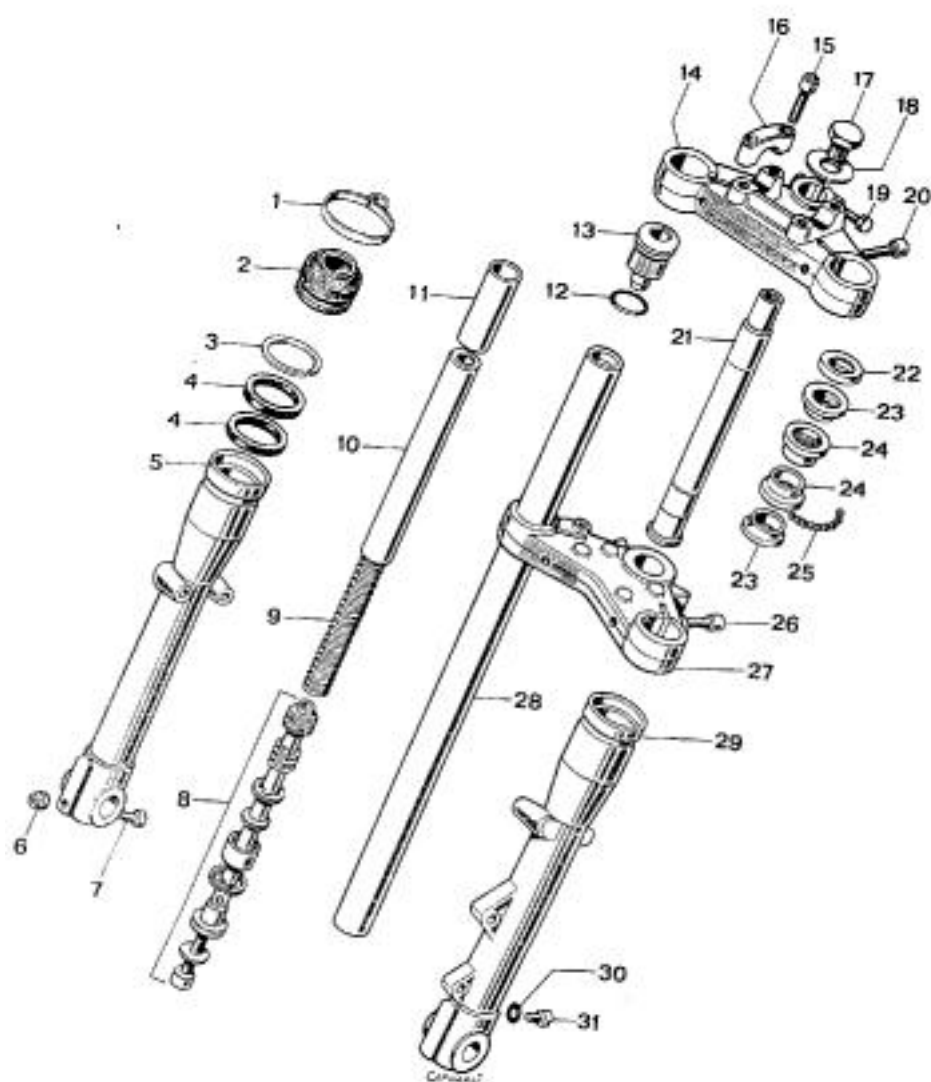


Table 13B

No.	Code	Denominazione	Description
1	42.08.17	Anello passafilo	Guiding slit ring
2	42.08.18	Gommono $\phi 34 \div 35$	Dust cover guard $\phi 34 \div 35$
3	42.08.24	Anello tenuta	Oil seal
4	42.08.14	Anello tenuta	Oil seal
5	42.08.07	Gamba destra	Right leg
6	47.03.22	Dado autobloccante $\phi 8$ MA VT. 324	Self-locking nut
7	42.08.35	Vite T.E. $\phi 8 \times 55$	Hexagonal head screw $\phi 8 \times 55$
8	42.08.20	Gruppo freno idraulico	Hydraulic brake set
9	42.08.04	Molla forcella	Fork spring
10	42.08.22	Tubo guida molla	Spring guiding pipe
11	42.08.21	Tubo per molla	Spring pipe
12	42.08.16	OR per tappo chiusura	Closing cap OR
13	42.08.15	Tappo chiusura	Closing cap
14	42.08.01	Piastra superiore	Upper trapezium
15	42.08.32	Vite T.C.C.E. $\phi 8 \times 30$	Cheese-headed socket screw $\phi 8 \times 30$
16	42.08.08	Cavallotto fissaggio manubrio	Handle bar U-bolt
17	42.08.36	Dado cannotto	Sleeve nut
18	42.08.37	Rondella cannotto	Sleeve washer
19	42.08.38	Vite T.E. $\phi 8 \times 55$	Hexagonal head screw $\phi 8 \times 55$
20	47.06.12	Vite T.C.C.E. $\phi 10 \times 40$	Cheese-headed socket screw $\phi 10 \times 40$
21	42.08.39	Canotto sterzo	Steering sleeve
22	15.06.14	Copricapota sterzo	Steering cover guard
23	19.02.21	Cono sterzo	Steering cone
24	19.02.20	Calotta sterzo	Steering cover
25	24.03.05	Sfera $\phi 1/4"$	Steel ball $\phi 1/4"$
26	42.08.40	Vite T.C.C.E. $\phi 10 \times 45$	Cheese-headed socket screw $\phi 10 \times 45$
27	42.08.02	Piastra inferiore	Lower trapezium
28	42.08.03	Stelo	Stem
29	42.08.06	Gamba sinistra	Left leg
30	42.08.41	OR 2021	Ring
31	42.08.42	Vite T.C. $\phi 6 \times 7$	Screw T.C. $\phi 6 \times 7$